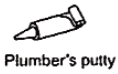


INSTALLATION INSTRUCTIONS

INSTALLATION MANUAL

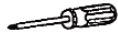
Tools You Will Need:



Plumber's putty



Pipe tape



Phillips Screwdriver



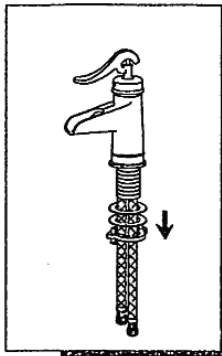
Pliers



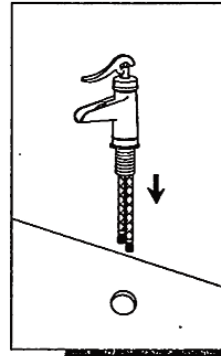
Adjustable wrench



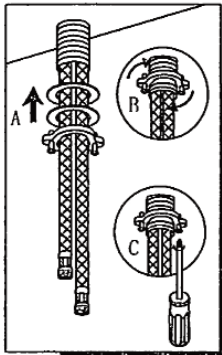
INSTALLATION STEPS:



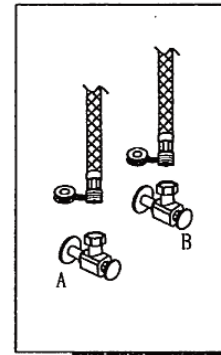
1. Remove the mounting hardware from the faucet.



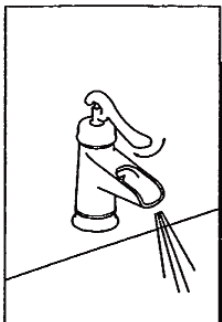
2. Install faucet body through top of sink.



3. From underneath the sink, replace the washers and lock nut. Use philips screwdriver for final tightening after spout is aligned.



4. Connect to water supply.

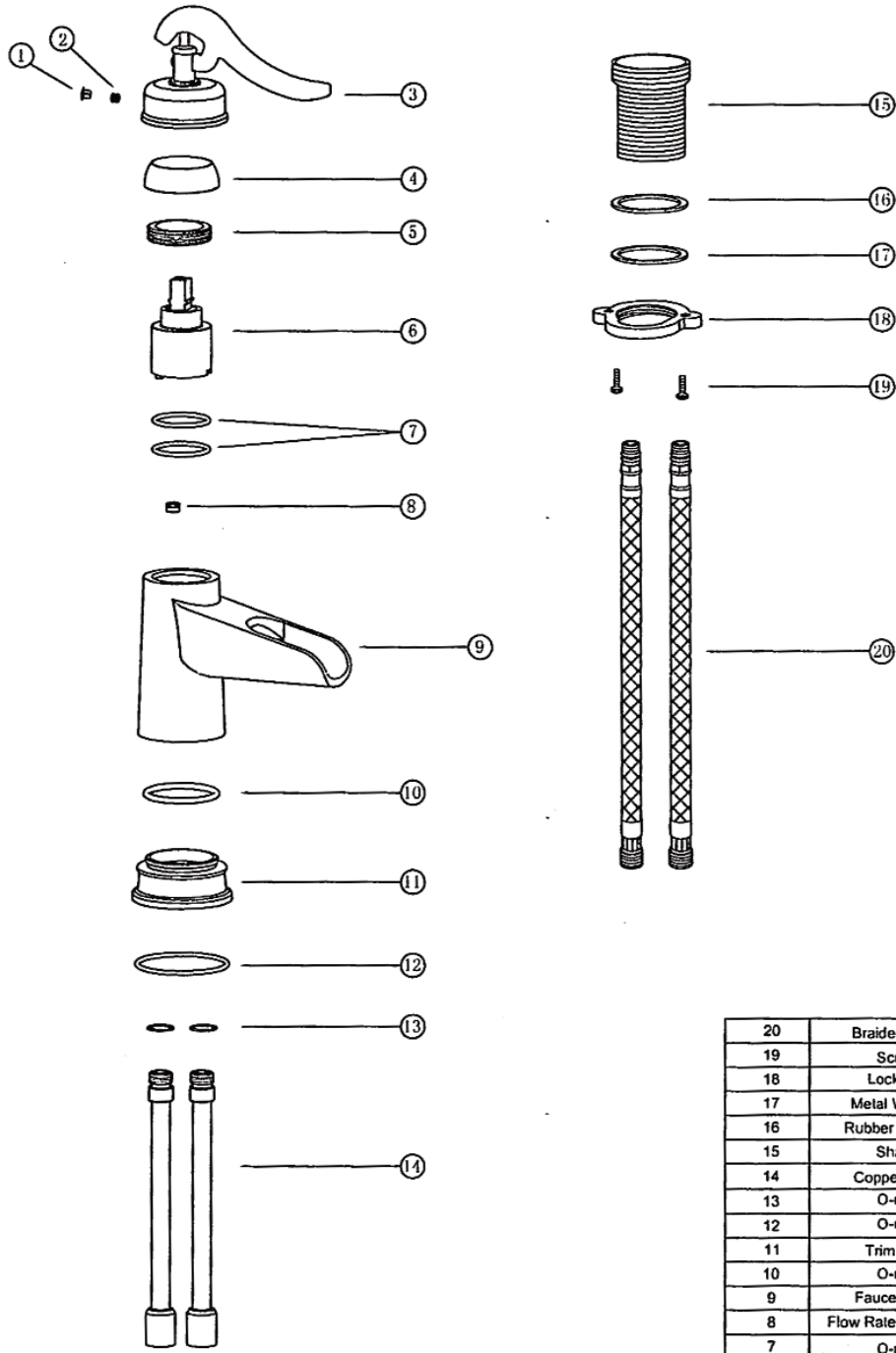


6. After installing faucet, remove spray assembly and open the hot and cold water supplies. Check for leaks. Turn on faucet handle for one minute to flush debris from faucet. Close the handles and re-assemble the spray.



Single Handle Lavatory Faucet LFS308

Exploded Drawing



20	Braided Hose	2
19	Screw	2
18	Lock Nut	1
17	Metal Washer	1
16	Rubber Washer	1
15	Shank	2
14	Copper Tube	2
13	O-ring	1
12	O-ring	1
11	Trim Seat	1
10	O-ring	1
9	Faucet Body	1
8	Flow Rate Regulator	1
7	O-ring	2
6	Ceramic Disc Cartridge	1
5	Cartridge Nut	1
4	Trim Cap	1
3	Handle	1
2	Screw	1
1	Button	1